



# GMT MONTHLY MEMBERSHIP PROGRESS REPORT

Results as of: 5/31/2020

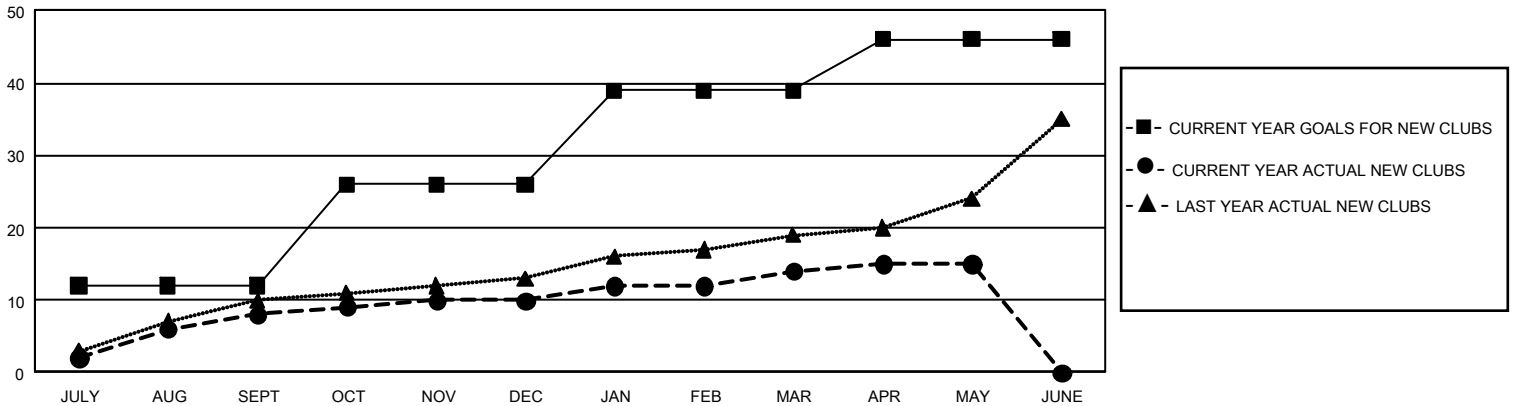
## GMT Constitutional Area 3, Group C

GMT: OPEN

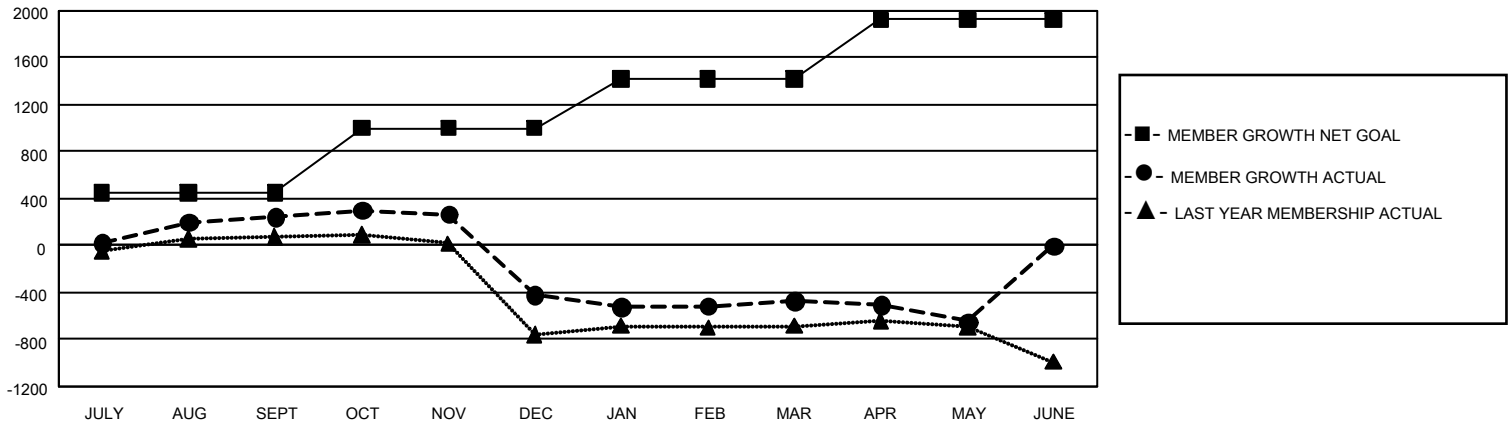
REPORT DOES NOT INCLUDE CLUBS IN UNDISTRICTED AREAS.

Clubs				Members			
RESULTS FOR 2019-2020				RESULTS FOR 2019-2020			
QUARTER	NEW CLUB GOAL	NEW CLUBS	DROPPED CLUBS	QUARTER	MEMBER GROWTH NET GOAL	MEMBER GROWTH ACTUAL	DROPPED MEMBERS ACTUAL (including transfers)
JULY/AUG/SEPT	36	8	3	JULY/AUG/SEPT	1,350	686	395
OCT/NOV/DEC	42	2	14	OCT/NOV/DEC	1,650	392	1,024
JAN/FEB/MAR	39	4	9	JAN/FEB/MAR	1,260	382	334
APR/MAY/JUNE	21	1	3	APR/MAY/JUNE	1,515	137	298

**GOALS AND ACTUAL NEW CLUBS CUMULATIVE**



**GOALS AND ACTUAL MEMBERS CUMULATIVE**



<b>DROPPED CLUBS: 29</b>	289 CLUBS OF 651 ADDED 1 OR MORE NEW MEMBERS	<b><u>GENDER DISTRIBUTION</u></b> MALE            6,048 (44.61%) FEMALE          7,511 (55.39%)
<b><u>DROPPED MEMBERS</u></b> DECEASED            83 CLUB CANCELLED      290 OTHER                1,672 <hr/> TOTAL                 2,045	<a href="#">CLICK HERE FOR CUMULATIVE MEMBERSHIP DATA</a>	TOTAL FAMILY UNIT MEMBERS            5,142  FAMILY MEMBERS PAYING HALF DUES      3,005